

4K Professional Broadcast PTZ Camera

TVP-UHD800 Series

2160p@60/59.94

1/1.8"

NDI/HX3

Dual 12G-SDI

RTMP/s

SRT

FREE D





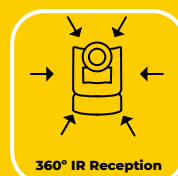
TVP-UHD800 Series

UHD800 adopts a new ROBOTIC concept appearance & U Type design, more stable and more smoothly in Pan/Tilt move. It will provide users with Real 4K@60 ultra-high-definition video experience with More Really, More Colorful, More Clear.

Equipped with 1/2.5" or 1/1.8" New Generation Sony 4K High quality Sensor, with 12X/20X/30X multiple Optical Zoom lenses, and abundant Video interface; Support USB3.0, HDMI2.0 and 2*3G-SDI or Dual 12G-SDI Video output, and it can support NDI/HX3, which can give users the option to join Ultra HD broadcast workflows or transmit low latency UHD video over IP networks; SRT & FreeD Protocol also will be help user in AR/VR filed. And Built-in VISCA/Visca Over IP/ PELCO P/D/ ONVIF communication Protocol to to seamlessly integrate system control applications.

It can be widely used in Broadcast studios, Education recording, Conferences AV, Telemedicine, Remote training, Court trial systems, Emergency command systems, and Sports & Events Streaming.

4K
60 fps



TVP-UHD800 Series

4K Ultra-High-Definition ultimate picture quality, More Really, More Colorful, More Clear

TVP-UHD800 Adopt 8.3 Megapixels Sony high quality 4K CMOS sensor, can reach maximum 3840x2160 resolutions and output frame rate up to 60fp & 59.94.

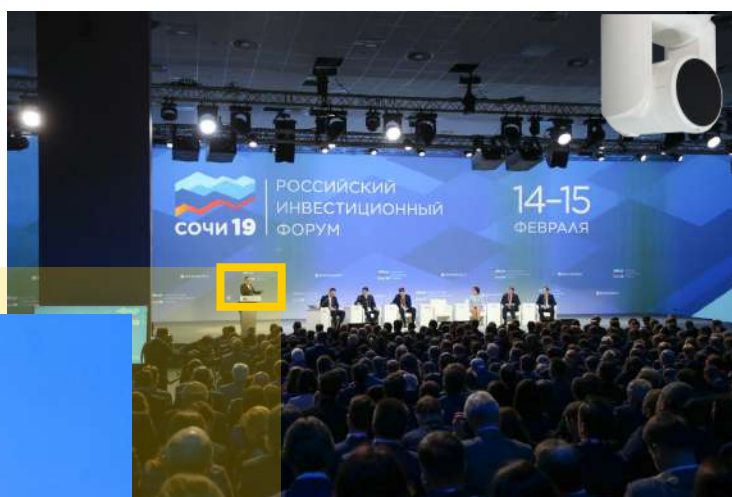


12/20/30X optical zoom lens to capture every detail of what you need

Equipped with a 1/2.5" or 1/1.8" new generation SONY sensor, a variety of optical zoom lenses such as 12x, 20x, and 30x can be selected. with Fast zoom and focus capabilities to provide clear and smooth images for user.

12/20/30X

Optical Zoom



NDI|HX3 Upgrade For Cameras

	NDI HX3	NDI HX2
Quality	Very Good	Good
Bandwidth	Middle (~80 Mbps)	Low (~18 Mbps)
Latency	Extremely Low	Medium
Requires FPGA	No	No
GOP	1or2	60

NDI | HX3 with Very Low Latency

The camera embedded with the latest NDI 5.0 technology, with Ultra-Low Latency, Low Bandwidth requirements to feed with your Full HD4K Video Streaming.

Abundant Interface, Max support Dual 12G-SDI video synchronous Video output

Support HDMI 2.0 HD, 2*3G-SDI or 2*12G-SDI and IP Streaming/NDI output, USB3.0 uncompressed UVC output, optional SDVoE uncompressed network output, and all HDMI, SDI, IP, USB, SDVoE interfaces can synchronous output 4K60 images, Especial UHD800 Dual SDI Video Output design. Multi-channel SDI signal output can be realized without SDI distributor

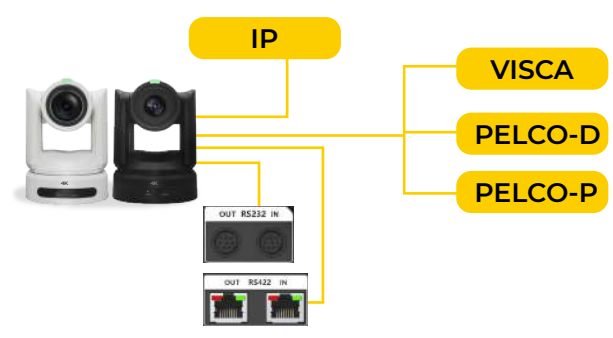


Live VR/AR video production

UHD800 supports the FreeD protocol. This enables users to work with Virtual Reality and Augmented Reality sets without the need for additional sensors.

Support multiple communication ways in remote control

UHD800 Built-in Multiple Communication Protocol of VISCA/UDP/ONVIF/PELCO/P, PELCO D/UVC. It can support Communication Control by RS485/RS422/RS232/USB3.0/ IP interface.

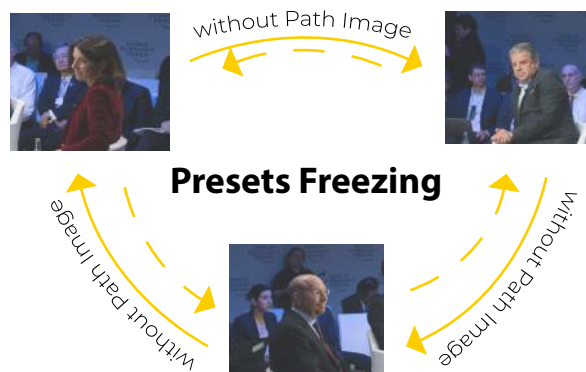
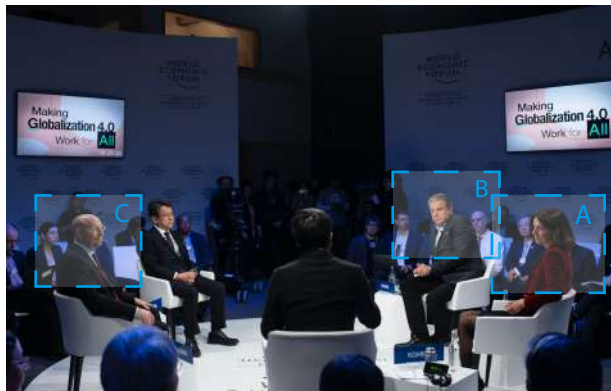


More stable and More smoothly & Ultra-silent in Pan/Tilt move

Using high-precision stepping motor with "U" Type Structure design in our Ultra-unique silent Drive, More stable and More smoothly in Pan/Tilt move, Ultra-silent.

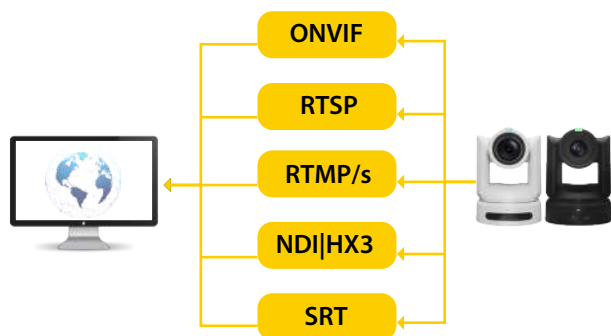
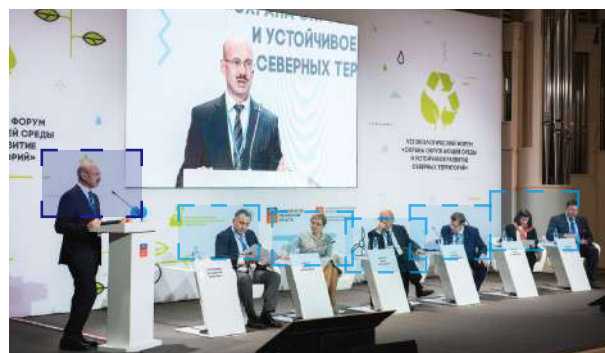
Supports the preset freeze function, scene switching

The camera supports the preset freeze function. Users can enable this function and use the preset function to realize free switching of scenes.



Max Support 255 Presets

The camera can setting & call Presets max to 255 presets. (The Remote controller max support 10 Presets), You can freely switch the image at will, even in complex scenes, Don't let you miss every important moment.



IP Streaming in your video production

Support ONVIF, RTSP, RTMP/s, NDI|HX3, SRT protocols, and can be expanded according to user needs.

Double Color Tally Light

The Tally light support 2 kinds of color Red & Green. and the brightness can be adjusted according to customize. Distributed in Front or Behind of Camera.



360° infrared remote control

Supports 360° infrared remote control, no matter what angle or position, the user can freely control the camera through Remote Controller.

-Specifications-

4K Ultra HD PTZ Camera	Model	TVP-UHD812	TVP-UHD820	TVP-UHD830
	CMOS Sensor	1/2.5" CMOS	1/1.8" CMOS	1/1.8" CMOS
	Zoom	12X	20X	30X
	Effective Pixels	8.3 Megapixels		
	Video Format	2160P60/59.94, 2160P50, 2160P30/29.97, 2160P/25; 1080P60/59.94, 1080P50, 1080P30/29.97, 1080P25; 1080i60/59.94, 1080i50; 720P60/59.94, 720P50		
	Optical Zoom	12x Optical Zoom 12X Digital Zoom	20x Optical Zoom 12X Digital Zoom	20x Optical Zoom 12X Digital Zoom
	Focus Length	f=3.85~43.08mm	f=7.1~141.3mm	{=7.1~211.95mm
	HFOV	7.9°(T) ~80.4°(W)	3.6°(T) ~59.2°(W)	2.5°(T) ~59.2°(W)
	Iris	F1.8 ~ F3.68	F1.61 ~ F5.19	F1.61 ~ F5.19
	Min Illumination	0.05 lux (F1.61)		
	Digital Noise Reduction	2D&3D Noise Reductio		
	White Balance	Manual/Auto/Indoor/outdoor/One Push//3000K/4000K/5000K/6500K/ATW		
	Focus mode	Manual/Auto/Z- Trigger		
	Iris mode	Manual/Auto		
	BLC	1-8/OFF		
	I/O Parameters	Picture adjustment	Brightness, Hue, Saturation, Contrast, Sharpness	
Video Output Interface		HDMI2.0, 3G-SDI*2 or 12G-SDI*2, RJ45, USB3.0		
Video Compression Format		H.264, H.265, MJPEG		
Control interface		1X RS232 IN, 1X RS232 Out, 1X RS422 IN, 1X RS422 Out , 1X RJ45		
Control Protocol		VISCA /PELCO-D / PELCO-P, VISCA OVER IP, ONVIF, UVC (only for USB interface)		
Baud Rate		2400/4800/9600 /19200/38400bps		
Audio Input		Dual channel 3.5mm line input		
Audio Compression		ACC, G711A, G711U		
Network Interface		1000M Internet Access(10/100BASE-TX)		
Network Protocol		RTSP, RTMP, ONVIF, NDI HX3, SRT, GB28181, VPN		
Power Interface		DC-038 Outlet(DC12V)		
Pan/Tilt Mechanical Parameters	Pan Rotation Angle	-173°~+ 173°		
	Tilt Rotation Angle	-30°~+ 90°		
	Horizontal rotation speed range	0.1~100°/s		
	Vertical rotation speed range	0.1~80°/s		
	Presets	Max Support 255 Presets		
General Parameters	Power Adapter	AC100V~AC240V Input, DC12V/2A Output		
	Input Voltage	DV12V		
	Power Consumption	15W(MAX)		
	Storage Environment	-10°C ~ +60°C / 20% ~ 95%		
	Working Environment	-10°C ~ +50°C / 20% ~ 80%		

-Products Picture-

